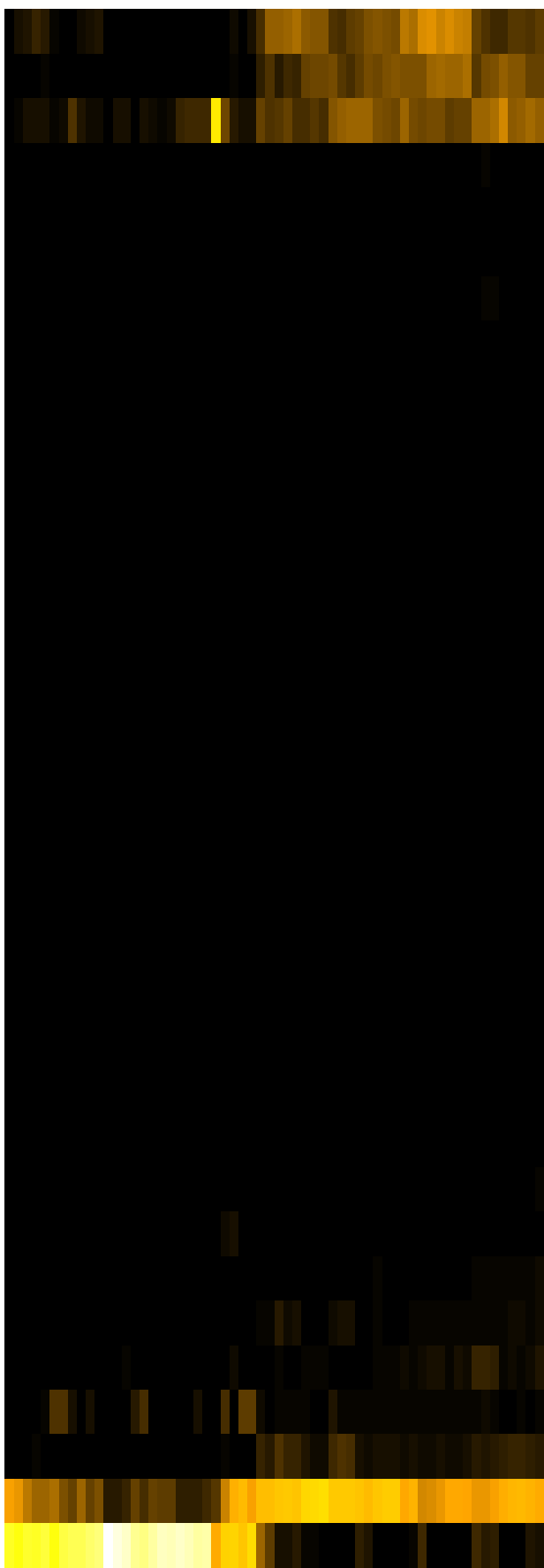
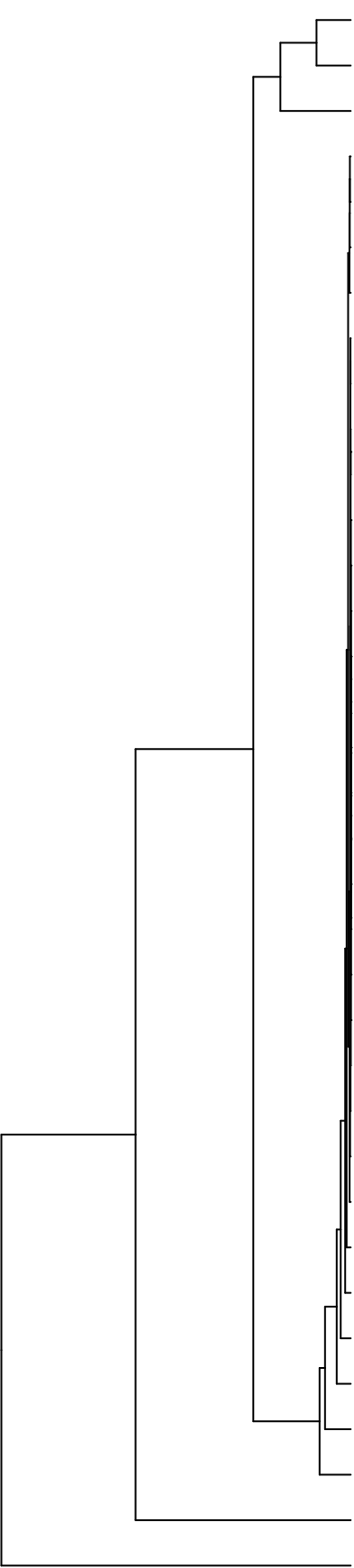


Group006
 G Final -PMA
 C Final -PMA



- Veillonellaceae
- Pasteurellaceae
- Neisseriaceae
- Leptotrichiaceae
- Prevotellaceae
- Porphyromonadaceae
- Campylobacteraceae
- Erysipelotrichaceae
- Saccharibacteria_(TM7)_[F-1]
- Atopobiaceae
- Burkholderiaceae
- Propionibacteriaceae
- Flavobacteriaceae
- Moraxellaceae
- Microbacteriaceae
- Sphingomonadaceae
- Rhizobiaceae
- Weeksellaceae
- Hymenobacteraceae
- Saccharibacteria_(TM7)_[F-2]
- Mycobacteriaceae
- Yersiniaceae
- Phyllobacteriaceae
- Absconditabacteria_(SR1)_[F-1]
- Comamonadaceae
- Lachnospiraceae
- Pseudomonadaceae
- Staphylococcaceae
- Gemellaceae
- Actinomycetaceae
- Fusobacteriaceae
- Micrococcaceae
- Carnobacteriaceae
- Streptococcaceae
- Enterobacteriaceae

- F28914.S441
- F28914.S411
- F28914.S409
- F28914.S572
- F28914.S412
- F28914.S448
- F28914.S573
- F28914.S599
- F28914.S442
- F28914.S445
- F28914.S446
- F28914.S576
- F28914.S575
- F28914.S283
- F28914.S288
- F28914.S286
- F28914.S096
- F28914.S281
- F28914.S284
- F28914.S089
- F28914.S093
- F28914.S256
- F28914.S249
- F28914.S250
- F28914.S255
- F28914.S123
- F28914.S122
- F28914.S128
- F28914.S126

Samples

Family